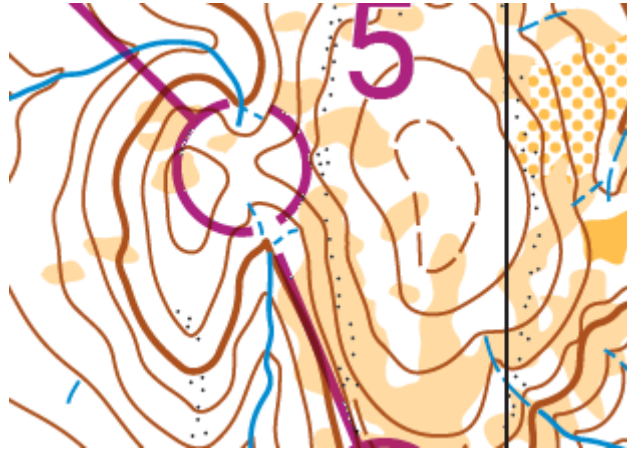


Saddles

It is very useful to identify saddles when navigating- and worth using old maps and having a look to see where you can see the saddles. Why not have a family competition to see who can find the most saddles on the map.

Standing on a saddle you can see two ways up (the tops of the hills) and two ways down (the gullies)

Can you pick the one here?



How many saddles can you see in the picture below?

