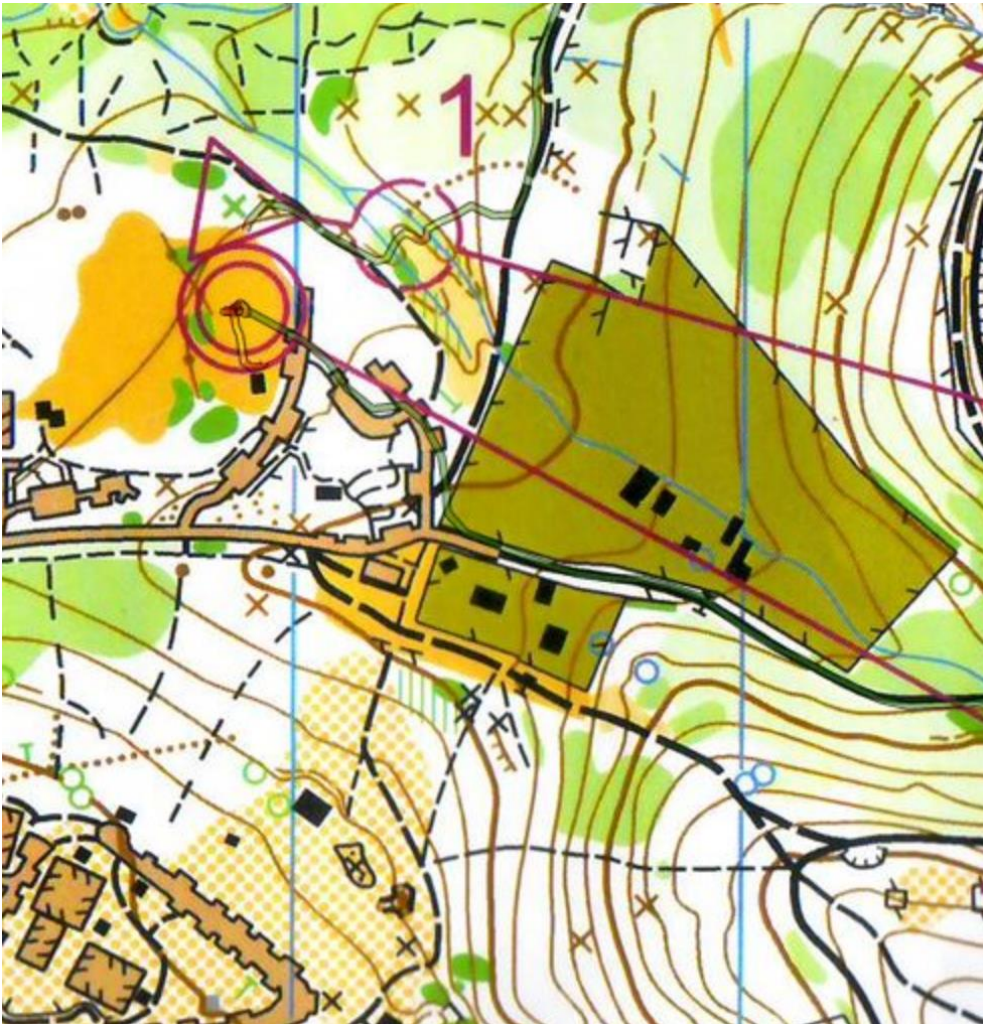




Hi Darts,

Tomorrow we have an event at Belair National Park. Below is a bit of map from Belair at a past event. We might start from near this start location tomorrow.



Be aware that there are different sized tracks.

Practice making sure that your map is orientated correctly (the path you are running on should be right in front of you on the map)

When you come to a junction check that you head in the right direction.

The pink/brown might be paved road or tennis courts (You can see them inside of fences in the bottom left hand side)

The olive green inside of the fences in out of bounds. Don't cross here.

That brown dotted line near number 1 is a ditch.

I hope to see you out there. Erica



Southern Darts Orienteering Squad